

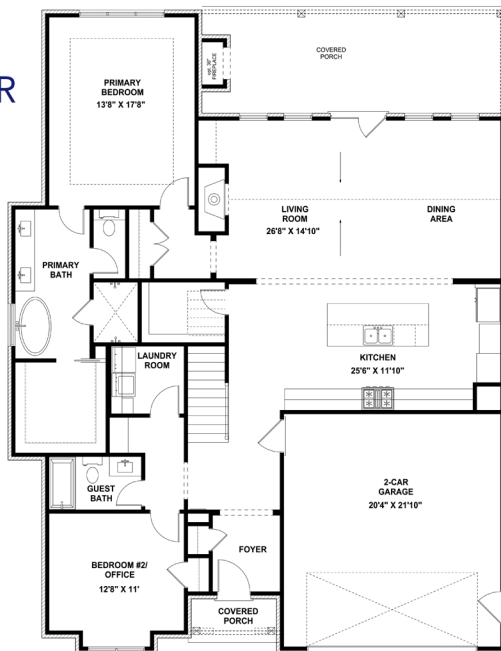
 CATATOGA

GOLDFINCH

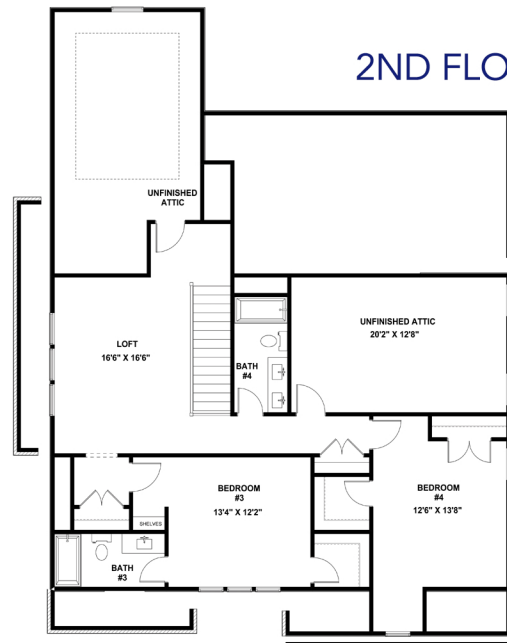
Primary Suite on Main Floor
2859 Sq. Ft.
4 Bed • 3.5 Bath



MAIN FLOOR



2ND FLOOR



- This open concept plan connects all the main living areas in a comfortable, welcoming style. This is home.
- With large windows and a huge fireplace, the great room is the spot for many memories to be made.
- The center island kitchen is waiting to indulge your inner chef with premium cabinetry to the ceiling, high-end kitchen appliances, a walk-in pantry, and plenty of seating at the island for taste testers.
- The Primary Retreat presents large windows, free standing tub, separate walk-in shower, and plenty of space in the closet.
- The second bedroom/study downstairs is perfect when working from home...private.
- Upstairs is a large loft, 2 additional bedrooms, 2 full baths, and additional storage or maybe a future bonus room.
- Prime Hardin Valley location with great schools and close proximity to restaurants, breweries, retail, parks and recreation.



Brian Shelby

Realtor®

10255 Kingston Pike • Knoxville, TN 37922

(o) 865.693.3232 • (c) 865.414.5347

bnshelby71@gmail.com

License # 327468

