

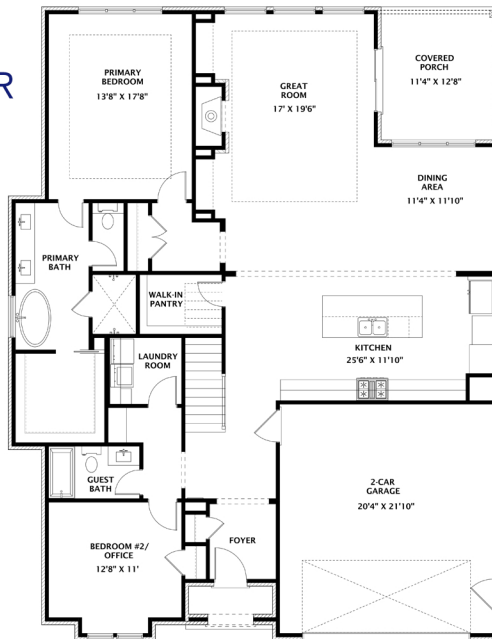
 CATATOGA

# HUMMINGBIRD

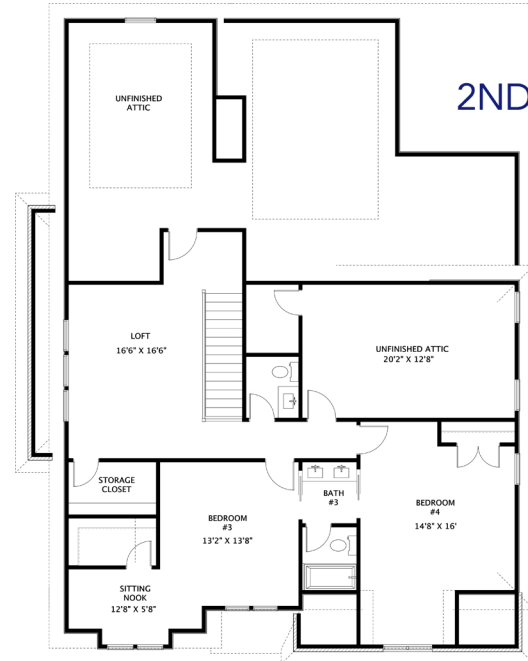
Primary Suite on Main Floor  
3118 Sq. Ft.  
4 Bed • 3.5 Bath



MAIN FLOOR



2ND FLOOR



- Welcome to this charming home that is close to everything but feels so secluded.
- The open concept plan connects all the main living areas so no one feels left out.
- The center island kitchen has everything you need, from walls of cabinetry with large quartz countertops, high-end appliances, a walk-in pantry, and a view outdoors.
- The Primary Retreat offers the ability to relax and recharge with a free-standing tub, separate walk-in shower, and plenty of space in the closet.
- Also on the main floor is a guest suite/study. The option is yours to decide.
- Upstairs is a large loft with 1/2 bath, 2 additional bedrooms sharing a bathroom with double vanity, and additional unfinished storage or maybe a future bonus.
- A prime Hardin Valley location means quick access to countless restaurants, breweries, retail, parks and recreation.



**Brian Shelby**

Realtor®

10255 Kingston Pike • Knoxville, TN 37922

(o) 865.693.3232 • (c) 865.414.5347

bnshelby71@gmail.com

License # 327468

