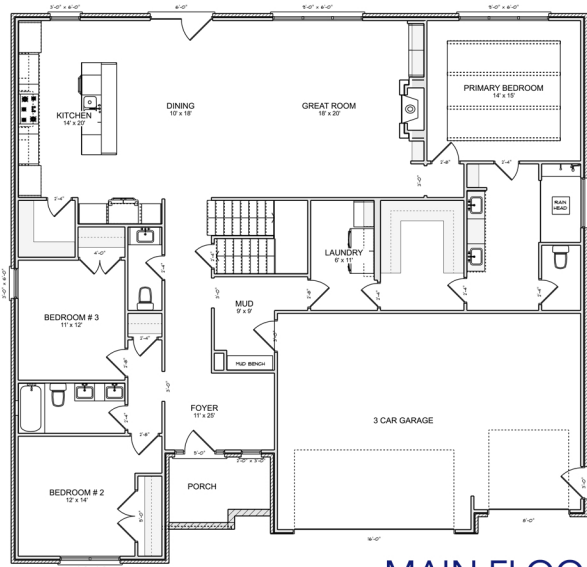


JOHNSTONE

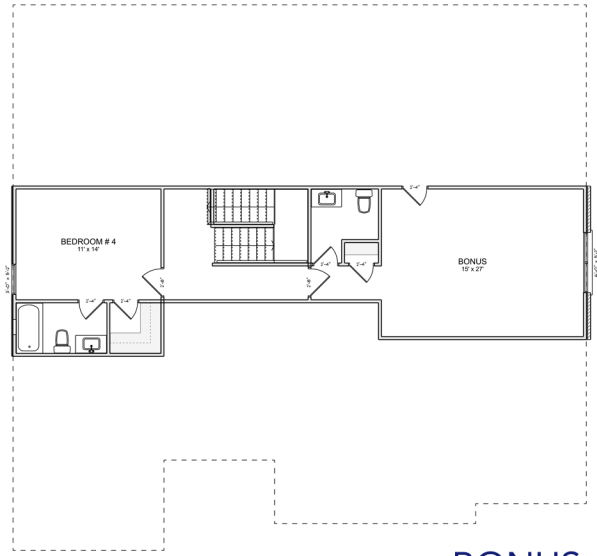


RANCHER

3075 Sq. Ft. • 4 Bed • 3 1/2 Half Bath



MAIN FLOOR



BONUS

- This beautiful home is not only inviting but comforting.
- A large foyer greets your guests at the front door while a large mud room with a drop zone greets you and yours at the garage.
- The center island kitchen is awaiting you to exercise your inner chef with custom cabinetry, walk-in pantry, stainless appliances, and quick access to the backyard deck if grilling is your thing.
- With large windows and a huge fireplace, the great room is the spot for many memories to be made.
- The Primary Suite makes a lovely statement with ceiling beams, large windows, a large walk-in shower, and access to the laundry room from your walk-in closet.
- 2 additional bedrooms, a full bath with double vanities, and a powder room finish the main floor.
- Upstairs you will find a huge bonus room and a half bath to be used however your heart desires...football? Also, a guest en-suite is above for those out-of-town guests.
- Prime Hardin Valley location with great schools and close proximity to restaurants, breweries, retail, parks and recreation.



Brian Shelby

Realtor®

10255 Kingston Pike • Knoxville, TN 37922

(o) 865.693.3232 • (c) 865.414.5347

bnshelby71@gmail.com

License # 327468

